

rexroth Product catalog



+86 150 539 47199



Topkitparts.com



george@topkitparts.com



1-1-401, Hailiang Mansion, Liuhang Street,
High-tech Zone, Jining City, Shandong
Province, China



Topkitparts Profile

Shandong Topkit Construction Machinery Equipment Co., Ltd., is a high-tech company specialized in the manufacturing and supplying for hydraulic pumps, valves, motors, reducers, gearboxes, etc.

We mainly focuses on hydraulic parts for hydraulic excavators, and the products have been serialized. We dedicated on the following three systems and five series products. We specialized in Positive flow system, negative flow system, load sensing control system; Five series refer to 6-ton products, 8-ton products, 20-ton products, 40-ton products, concrete series products.

Our featured products 20-ton excavator negative flow pump, positive flow pump, positive flow valve, and rotary motor passed the national appraisal in 2012.

In quality control, we passed the ISO2001:2015 quality management system certification in 2022; and we also passed the ISO14001:2015 environmental management system certification in this year. We always persist in the quality control and try best to enhance quality all the time.

In R&D Field, we have a professional team with more than 10 people, of which more than 90% have accumulated more than ten years of hydraulic product technology, and have become the main force for the company to develop new products.

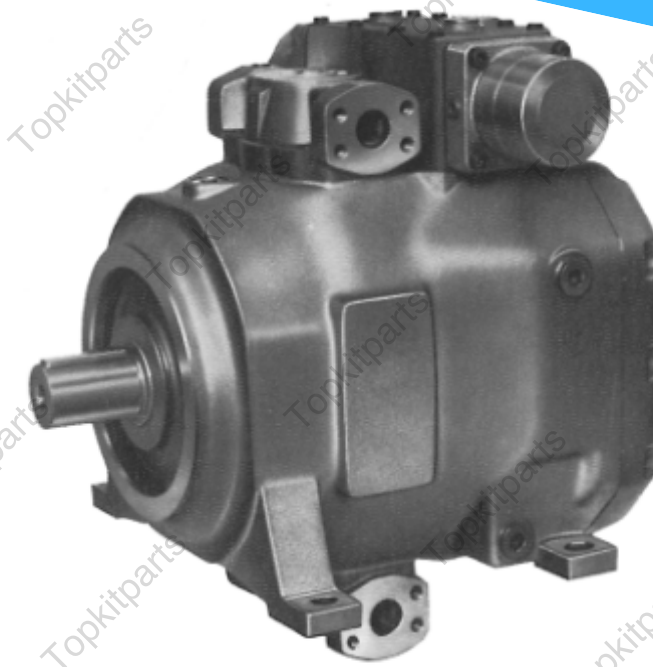


Supply Capability

Our products include **planetary gear pumps, vane pumps, piston pumps, diaphragm pumps and other related products** used in a wide range of industries including industrial machinery, construction equipment and marine vessels.

We cooperate with more than 50+ hydraulic pump brands in the world such as Kawasaki, Linde, Eaton, Danfoss, Volvo, etc.

Topkitparts is committed to providing high quality products with outstanding performance and reliability that meet or exceed customer expectations.



Rexroth hydraulic products

Keeping a market expectations mindset, Bosch Rexroth is setting a new standard for hydraulic pumps with continuous development at the highest standards and quality. Rexroth pumps are designed for high reliability and efficiency.

The lineup of pumps includes: Axial Piston Pumps, External Gear Pumps, Internal Gear Pumps, Gerotor Pumps, Vane Pumps, Radial Piston Pumps and Electro-hydraulic Pumps.

Rexroth pumps are designed as a solution point of view where the products are compatible with each other in order to provide a whole portfolio for our customers.

To help keep your systems operating safely and at maximum efficiency, Rexroth offers a wide range of pump accessories. Replacement seals, safety valve, mounting flanges, brackets, and adapters make installation easier and faster.

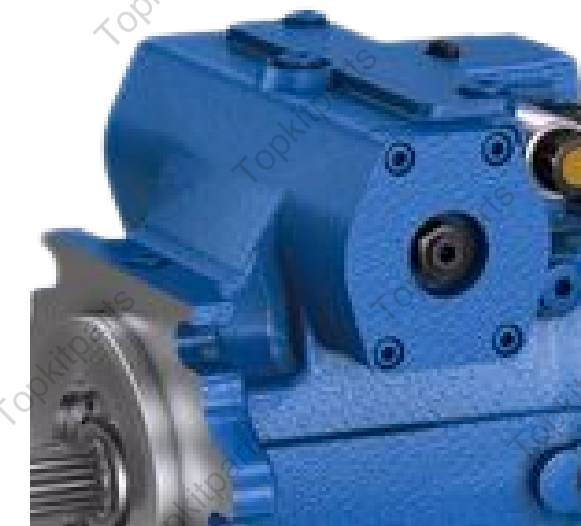
Rexroth Axial piston pumps

Axial piston pumps in swash plate and bent axis design are intended for the medium and high pressure range. Numerous variations in the designs, performance ranges, and adjustment options offer ideal solutions for mobile and stationary applications.

Fixed pumps



Variable pumps



Axial piston fixed pump A2FO series 70

Photo

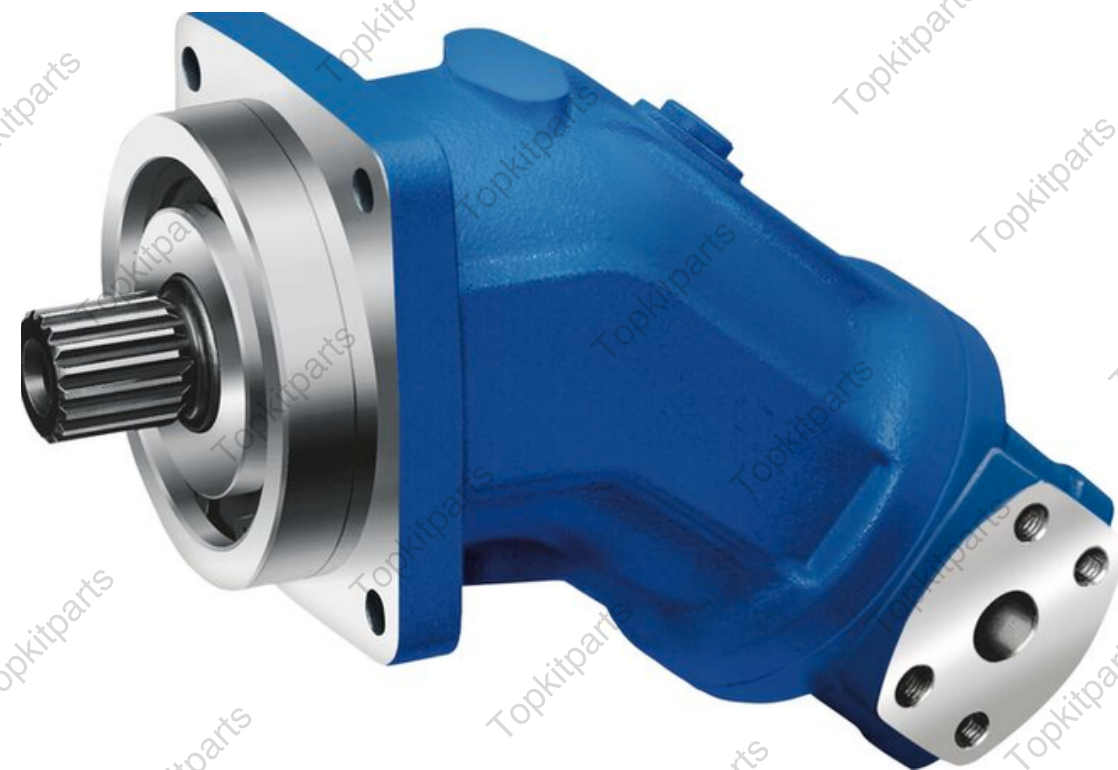


Technical data

- Compact high-pressure pump with short installation length
- Size 45 ... 125
- Nominal pressure 400 bar
- Maximum pressure 450 bar
- Open circuit
- SAE version

Axial piston fixed pump A2FO series 6x

Photo

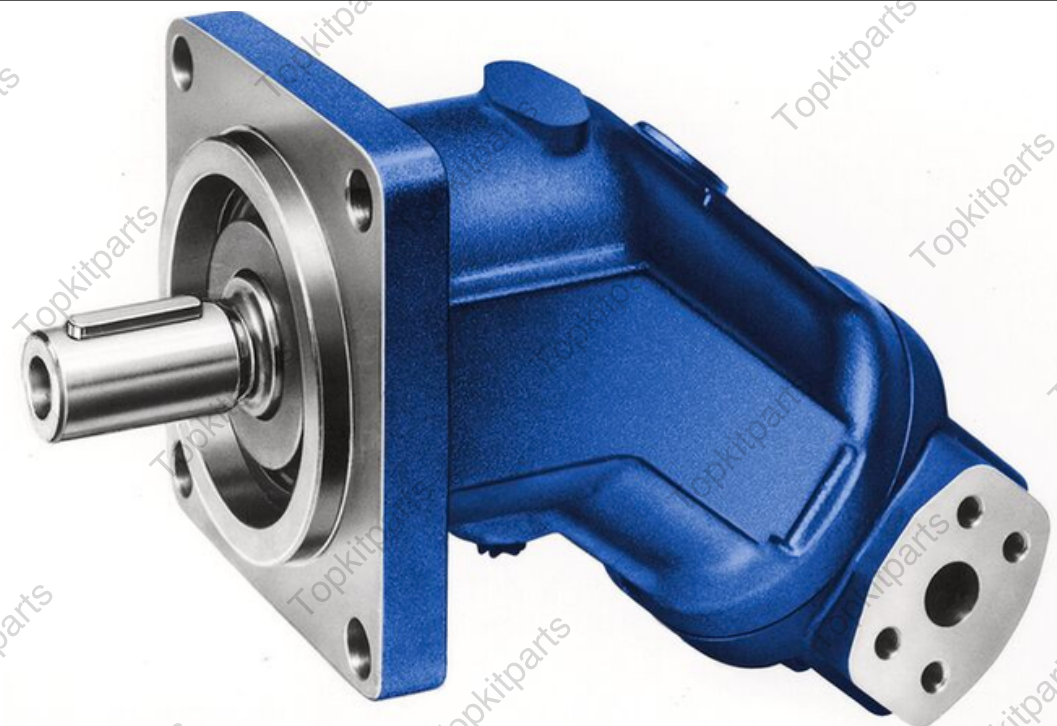


Technical data

- All-purpose high pressure pump
- Size 5 ... 32, 160 ... 1000
- Nominal pressure up to 400 bar
- Maximum pressure up to 450 bar
- Open circuit
- Metric version

Axial piston fixed pump AA2FO series 6x

Photo

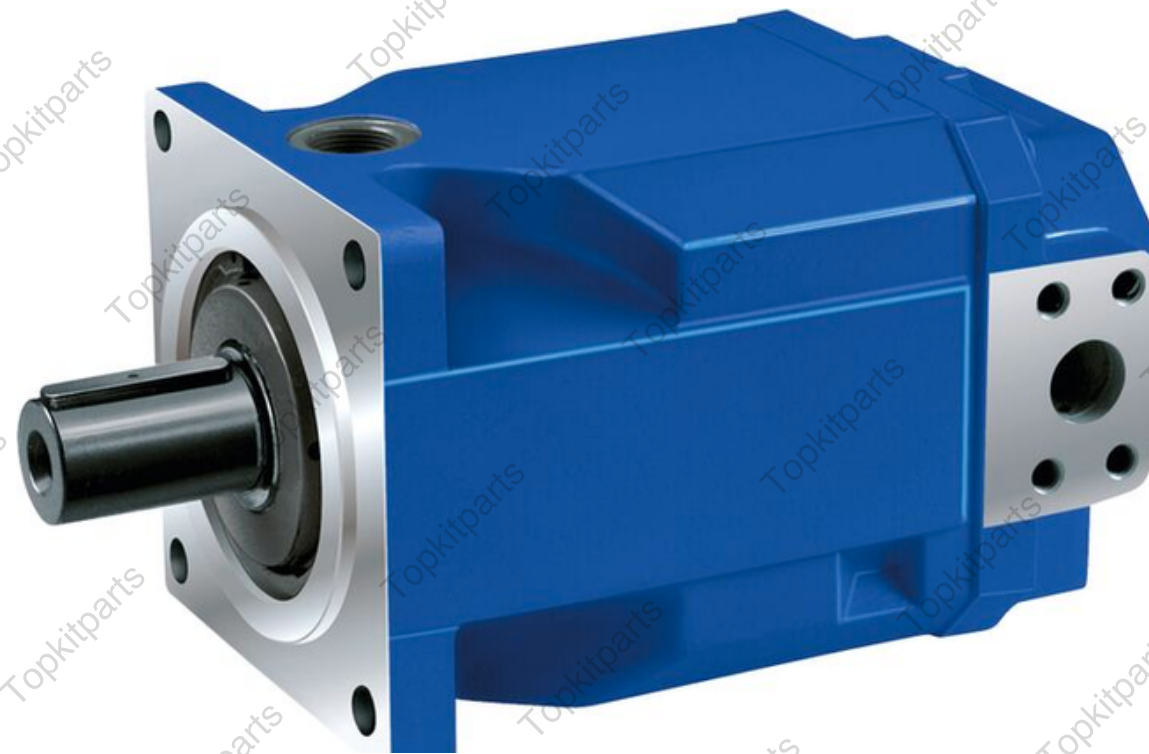


Technical data

- All-purpose high pressure pump
- Size 10 ... 16, 160 ... 250
- Nominal pressure up to 400 bar
- Maximum pressure up to 450 bar
- Open circuit
- SAE version

Axial piston fixed pump A4FO

Photo



Technical data

- All-purpose high pressure pump with through drive
- Size 22 ... 500
- Nominal pressure up to 400 bar
- Maximum pressure up to 450 bar
- Open circuit

Axial piston fixed pump A17FO series 10

Photo

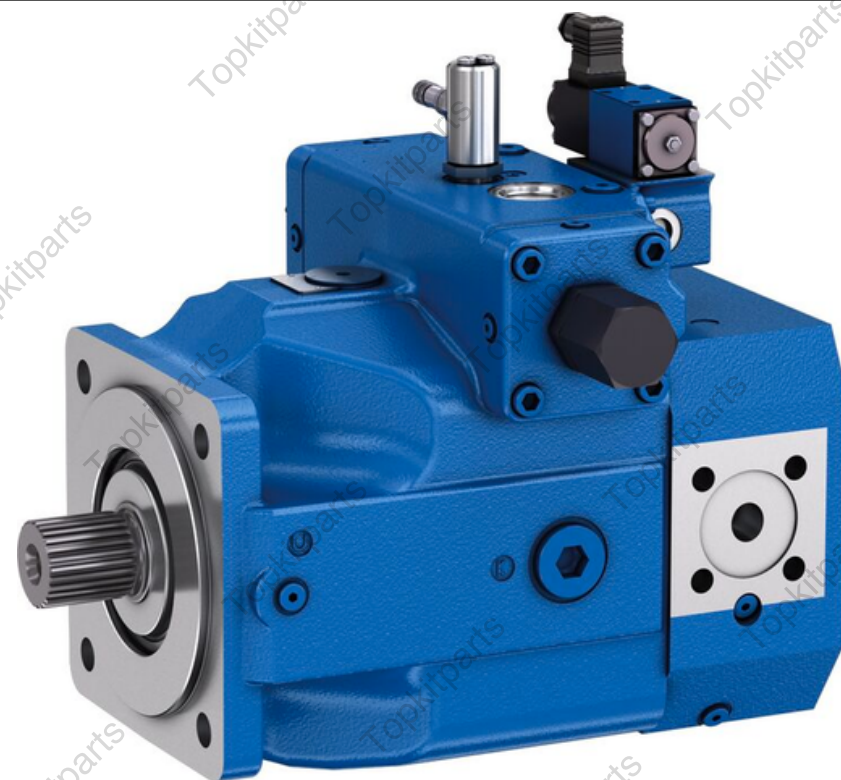


Technical data

- High pressure pump for applications in commercial vehicles
- Size 23 ... 107
- Nominal pressure 350 bar
- Maximum pressure 400 bar
- Open circuit

Axial piston variable pump A4VBO

Photo



Technical data

- Optimized high pressure pump for maximal power requirements up to 500 bar
- Size 71 ... 450
- Nominal pressure 450 bar
- Maximum pressure 500 bar
- Open circuit

Axial piston variable pump A4VHO

Photo



Technical data

- Optimized high-pressure pump for maximum power requirements up to 700 bar
- Size 450
- Nominal pressure 630 bar
- Maximum pressure 700 bar
- Open circuit

Axial piston variable pump A4VSO

Photo



Technical data

- Robust high pressure pump for industrial applications
- Size 40 ... 1000
- Nominal pressure 350 bar
- Maximum pressure 400 bar
- Open circuit
- Metric version

Axial piston variable pump A7VO series 63

Photo



Technical data

- Robust high pressure pump for universal use
- Size 28 ... 500
- Nominal pressure 350 bar
- Maximum pressure 400 bar
- Open circuit

Axial piston variable pump A10VO series 5x

Photo



Technical data

- For machines with medium pressure requirements
- Size 10 ... 100
- Nominal pressure 250 bar
- Maximum pressure 315 bar
- Open circuit
- Order

Axial piston variable pump A10VSO series 31

Photo



Technical data

- All-purpose medium pressure pump
- Size 18 ... 100
- Nominal pressure 280 bar
- Maximum pressure 350 bar
- Open circuit
- Metric version

Axial piston variable pump AA10VSO series 31

Photo



Technical data

- All-purpose medium pressure pump
- Size 18 ... 100
- Nominal pressure 280 bar
- Maximum pressure 350 bar
- Open circuit
- SAE version (for the US market)

Axial piston variable pump A10VSO series 32

Photo



Technical data

- Optimized medium pressure pump for high power machines
- Size 45 ... 180
- Nominal pressure 280 bar
- Maximum pressure 350 bar
- Open circuit

Axial piston variable pump A10VZO series 10

Photo

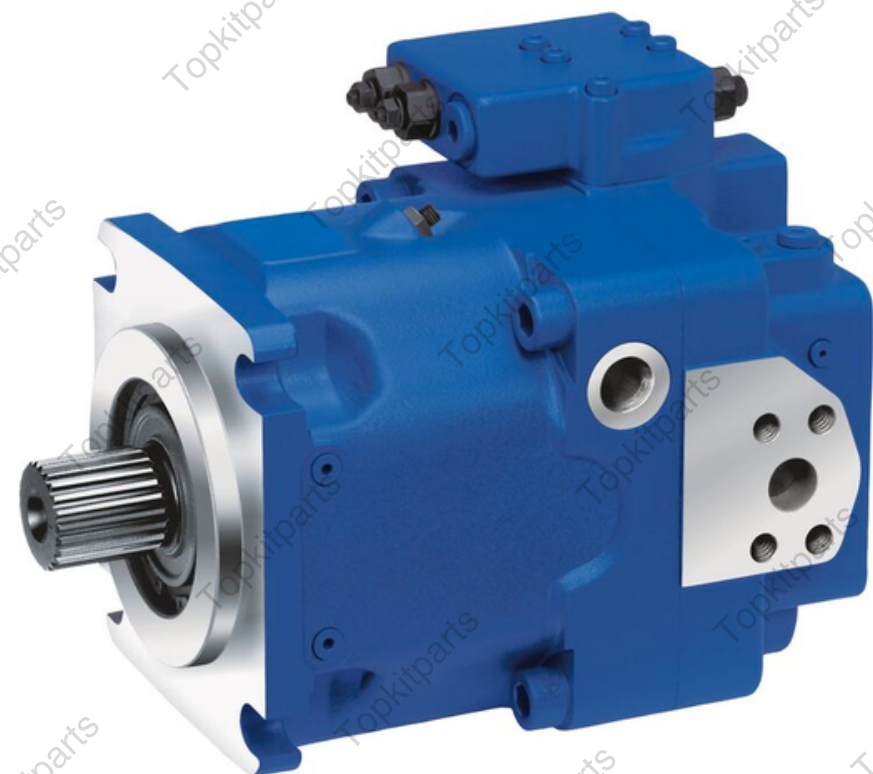


Technical data

- Suitable for variable-speed operation with synchronous and asynchronous motors
- Size 10 ... 180
- Nominal pressure up to 280 bar
- Maximum pressure up to 350 bar
- Open circuit

Axial piston variable pump A11V(L)O series 1x

Photo

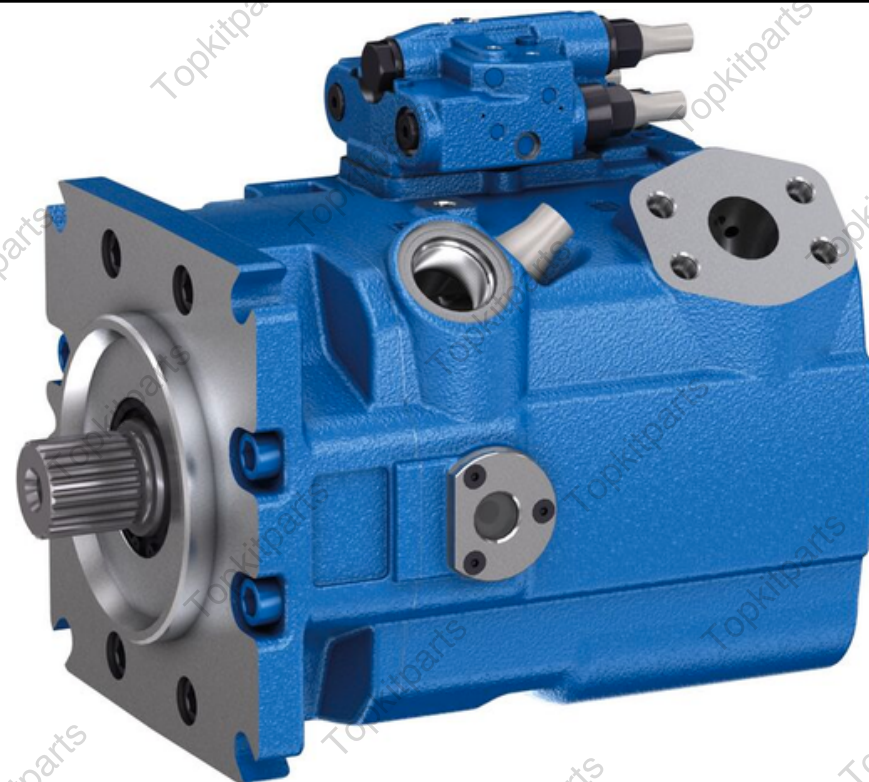


Technical data

- All-purpose high pressure pump with through drive
- Size 40 ... 260
- Nominal pressure 350 bar
- Maximum pressure 400 bar
- Open circuit
- Metric version

Axial piston variable pump A15VSO series 1x

Photo

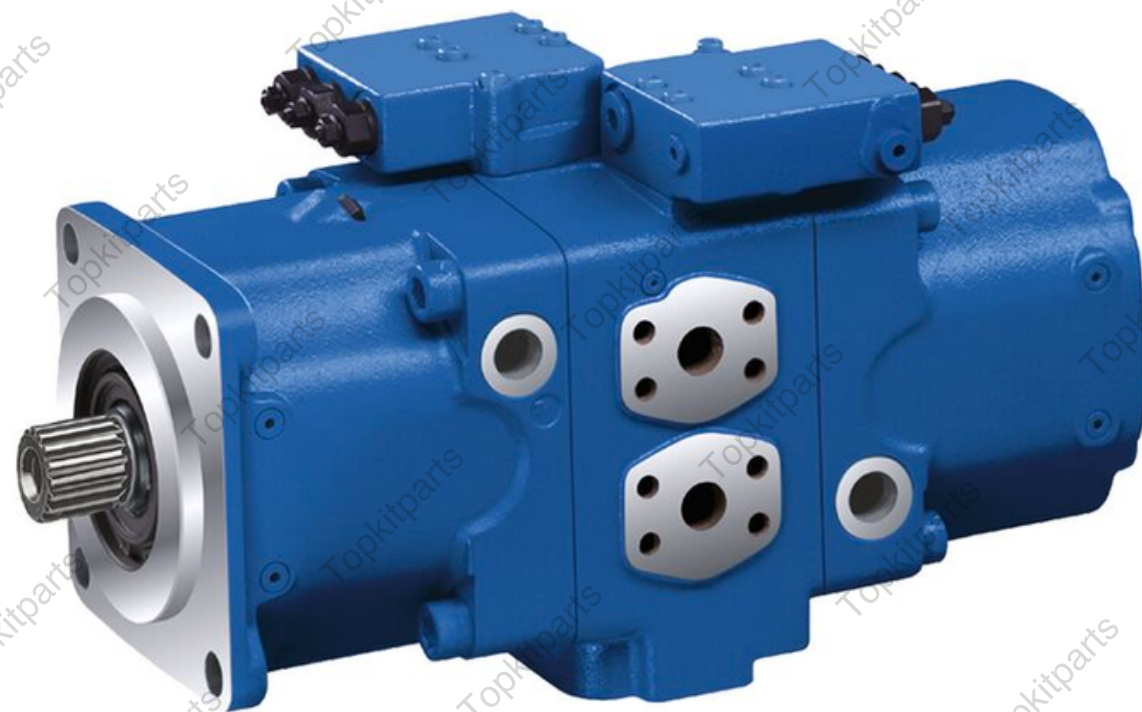


Technical data

- All-purpose high pressure pump with through drive
- Size 110 ... 280
- Nominal pressure 350 bar
- Maximum pressure 420 bar
- Open circuit

Axial piston variable double pump A20VO series 10

Photo



Technical data

- All-purpose high pressure pump with through drive
- Size 110 ... 280
- Nominal pressure 350 bar
- Maximum pressure 420 bar
- Open circuit

Axial piston variable double pump A28VLO series 10

Photo



Technical data

- High-pressure double pump for mobile machines with multi-circuit systems
- Size 280
- Nominal pressure 350 bar
- Maximum pressure 420 bar
- Open circuit

Metering pump A7VK series 10

Photo



Technical data

- Axial piston variable pump
- Size 12 ... 107
- Nominal pressure 250 bar
- Maximum pressure 315 bar
- Open and closed design

Axial piston variable pump A4VSG

Photo



Technical data

- Robust high pressure pump for industrial applications
- Size 40 ... 1000
- Nominal pressure 350 bar
- Maximum pressure 400 bar
- Closed circuit
- Metric version

Axial piston variable pump AA4VSG

Photo

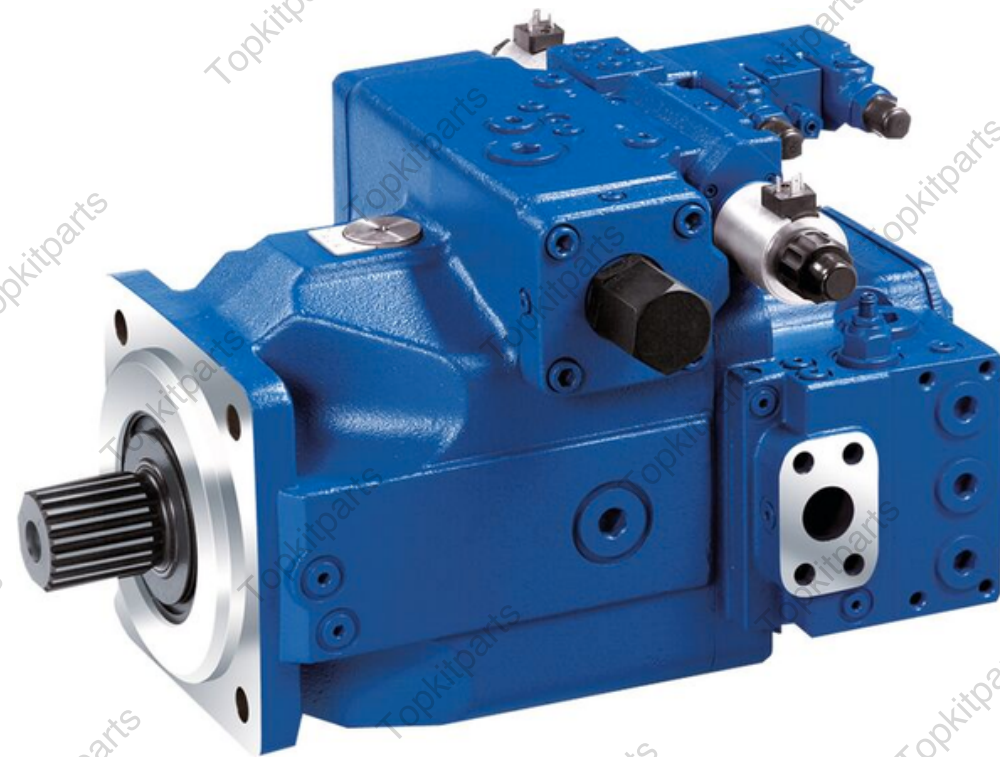


Technical data

- Axial piston variable pump
- Size 12 ... 107
- Nominal pressure 250 bar
- Maximum pressure 315 bar
- Open and closed design

Axial piston variable pump A4CSG series 30

Photo



Technical data

- Robust high pressure pump with integrated boost pump
- Size 250 ... 750
- Nominal pressure 350 bar
- Maximum pressure 400 bar
- Closed circuit
- Metric version

Axial piston variable pump A10VZG series 10

Photo

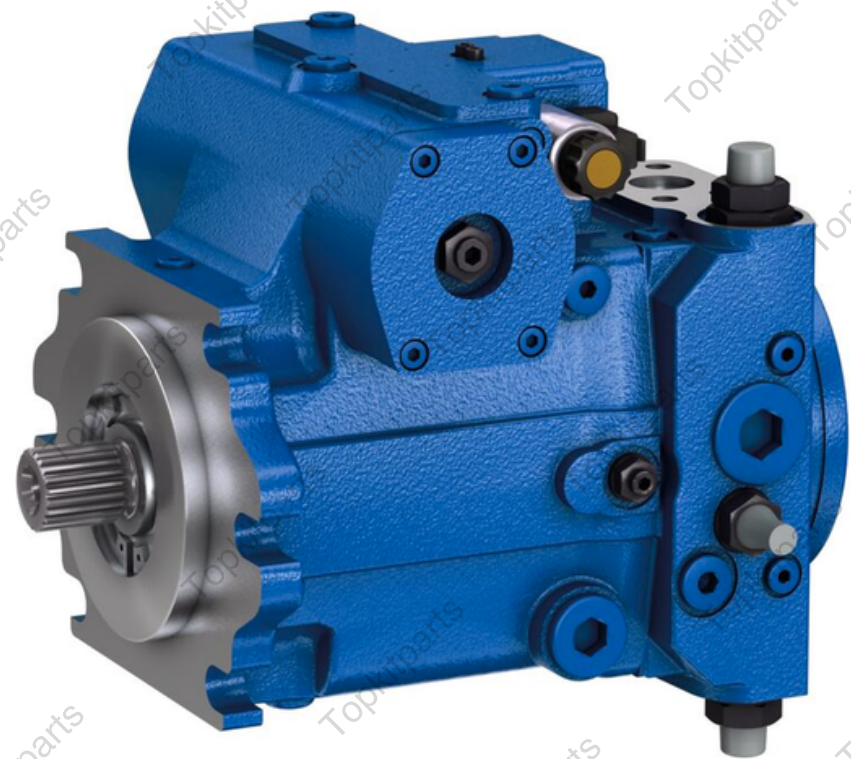


Technical data

- Suitable for variable-speed operation with synchronous and asynchronous motors
- Size 10 ... 63
- Closed circuit

Axial piston variable pump A4VG series 32

Photo



Technical data

- Axial piston variable pump
- Size 12 ... 107
- Nominal pressure 250 bar
- Maximum pressure 315 bar
- Open and closed design

Axial piston variable pump A4VSH

Photo



Technical data

- Robust high pressure pump for industrial applications
- Size 40 ... 250
- Nominal pressure 350 bar
- Maximum pressure 400 bar
- Semi-closed circuit

Axial piston variable pump AA4VG series 32

Photo



Technical data

- High pressure pump for applications in closed circuits
- Size 28 ... 125
- Nominal pressure 400 bar
- Maximum pressure 450 bar
- Closed circuit
- SAE version (for the US market)

Axial piston variable pump A4VG series 35

Photo

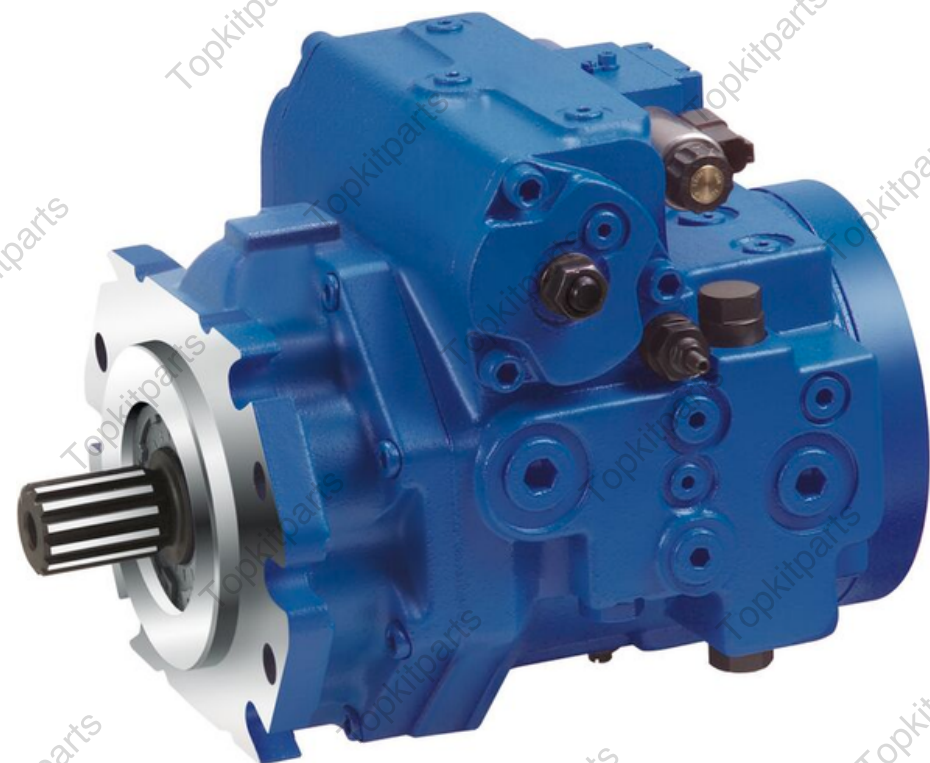


Technical data

- High pressure pump for applications in closed circuits up to 530 bar
- Size 56 ... 90
- Nominal pressure 400 bar
- Maximum pressure 530 bar
- Closed circuit

Axial piston variable pump A4VG series 40

Photo



Technical data

- Axial piston variable pump
- Size 12 ... 107
- Nominal pressure 250 bar
- Maximum pressure 315 bar
- Open and closed design

Rexroth Gear Pump

External gear pumps are cost-effective displacement pumps.

Internal gear pumps can be used up to a continuous pressure of 315 bar (depending on the frame size). This pump principle features a compact design with particularly high energy density.

External Gear Pumps



Internal Gear Pump



External gear pump High Performance AZPB

Photo



Technical data

- Platform B
- Fixed displacement
- Size 1.0 ... 7.1
- Continuous pressure up to 220 bar
- Intermittent pressure up to 250 bar

External gear pump High Performance AZPN

Photo



Technical data

- Platform F
- Fixed displacement
- Size 4... 28
- Continuous pressure up to 250 bar
- Intermittent pressure up to 280 bar

External gear pump High Performance AZPG

Photo



Technical data

- Platform G
- Fixed displacement
- Size 22... 100
- Continuous pressure up to 250 bar
- Intermittent pressure up to 280 bar

External gear pump SILENCE AZPS

Photo

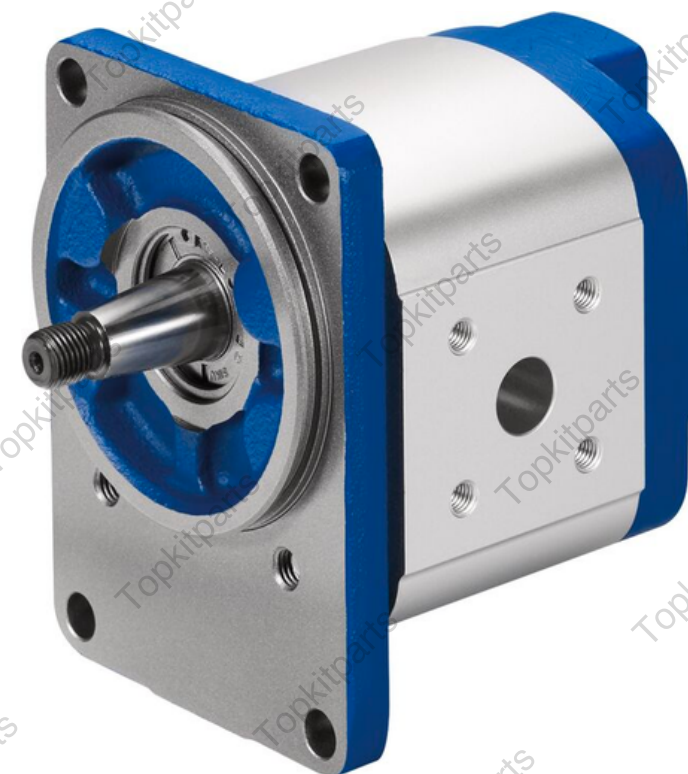


Technical data

- Platform F
- Fixed displacement
- Size 4... 28
- Continuous pressure up to 250 bar
- Intermittent pressure up to 280 bar

External gear pump SILENCE AZPT

Photo



Technical data

- Platform N
- Fixed displacement
- Size 20... 36
- Continuous pressure up to 250 bar
- Intermittent pressure up to 280 bar

External gear pump SILENCE AZPU

Photo



Technical data

- Platform G
- Fixed displacement
- Size 22... 63
- Continuous pressure up to 250 bar
- Intermittent pressure up to 280 bar

External gear pump SILENCE AZPU

Photo



Technical data

- Platform G
- Fixed displacement
- Size 22... 63
- Continuous pressure up to 250 bar
- Intermittent pressure up to 280 bar

Internal gear pumps PGF

Photo



Technical data

- Platform F
- Low noise fixed pump
- Size 12... 28
- Continuous pressure up to 250 bar
- Intermittent pressure up to 280 bar

Internal gear pumps PGH-2X

Photo



Technical data

- Fixed displacement
- Low operating noise
- Low flow pulsation
- High efficiency also at low speed and viscosity due to sealing gap compensation
- Suitable for broad viscosity and speed ranges

Internal gear pump, fixed displacement PGH-3X

Photo



Technical data

- Frame size 4, 5
- Size 20 ... 250
- Component series 3X
- Maximum operating pressure 350 bar
- Maximum displacement 250.5 cm³

Internal gear pump PGM-4X

Photo

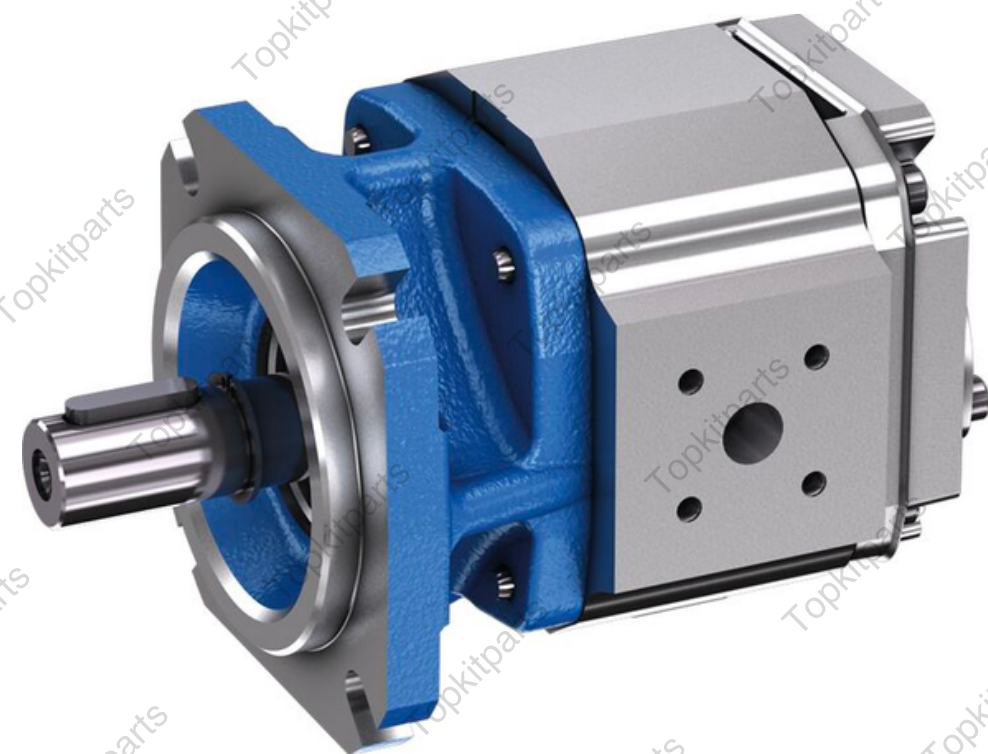


Technical data

- Frame size 4, 5
- Size 25 ... 125
- Component series 4X
- Maximum operating pressure 210 bar
- Maximum displacement 125.3 cm³

Internal gear pump PGP

Photo

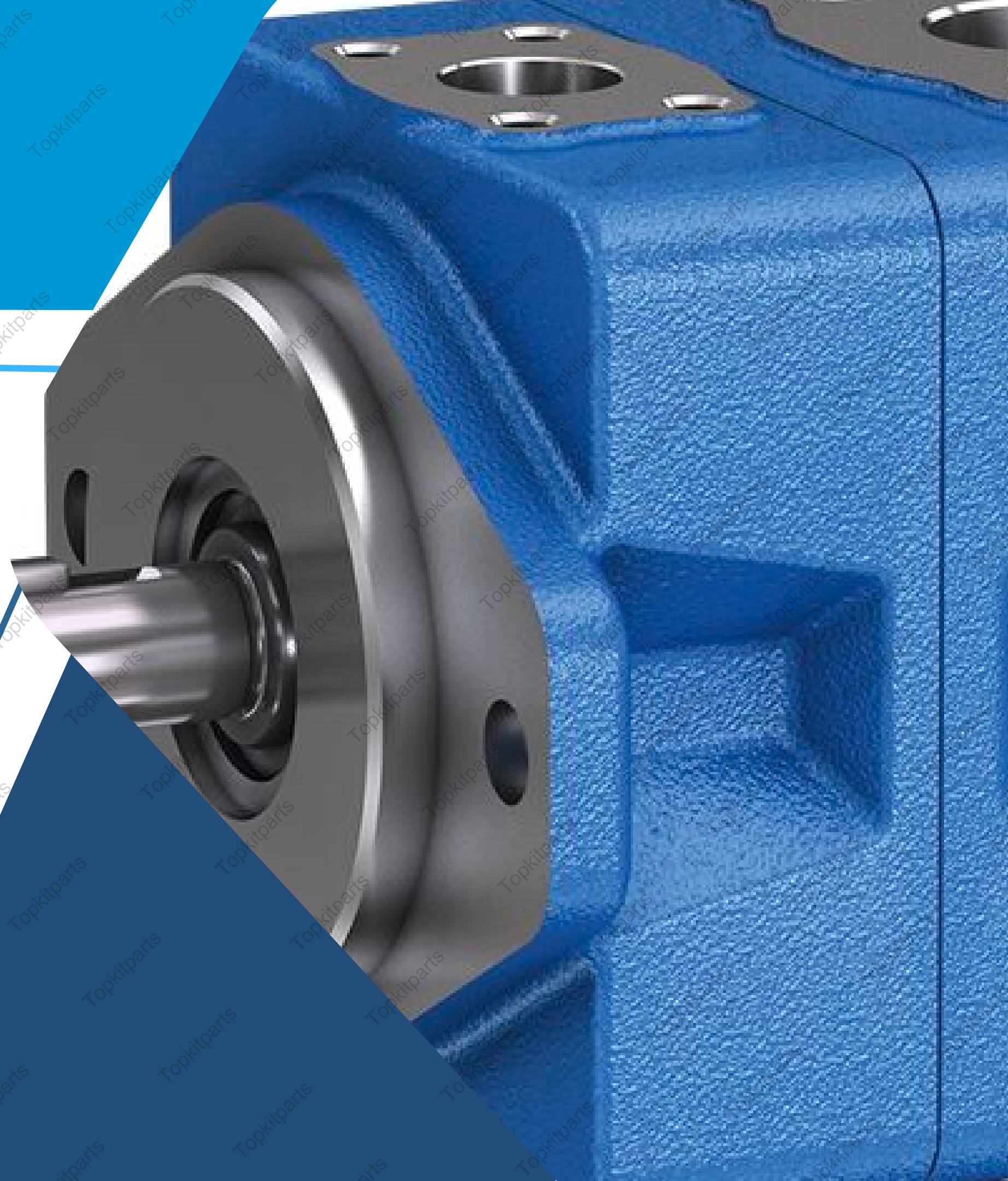


Technical data

- Fixed displacement
- Frame size 2, 3
- Size 6.3 ... 32
- Maximum pressure 350 bar
- Displacement 6.5 ... 32.5 cm³

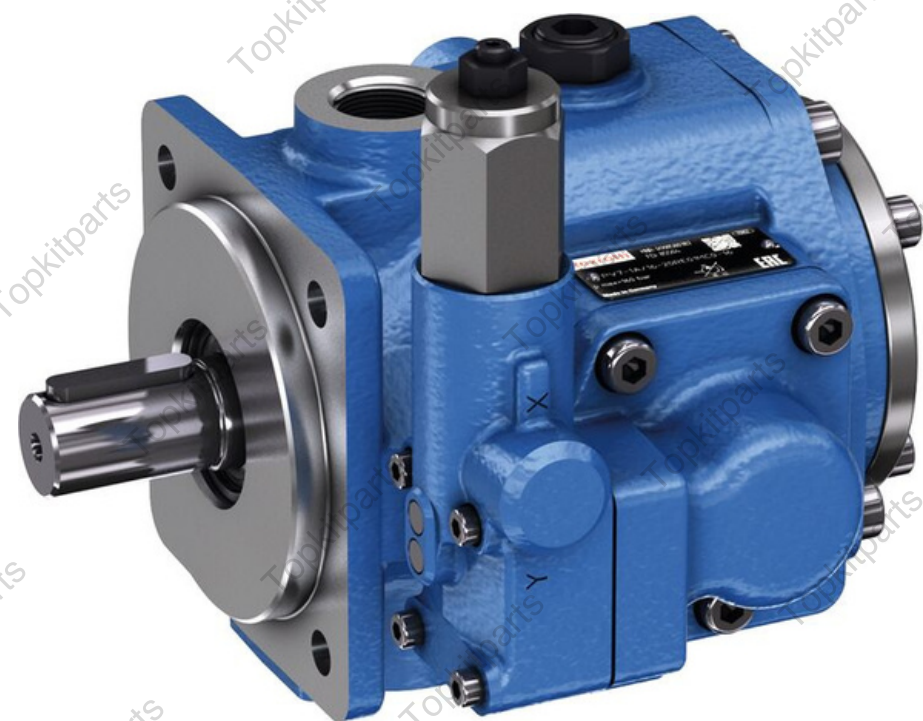
Rexroth Vane pumps

Vane pumps are available in a wider range of sizes. They are used in applications requiring medium operating pressures and low noise emissions.



Adjustable vane pumps, pilot operated PV7..C/D/N/W

Photo



Technical data

- Size 14 ... 150
- Component series 1X
- Maximum operating pressure 160 bar
- Maximum flow 270 l/min

Fixed displacement vane pumps PVV

Photo



Technical data

- Frame size 1, 2, 4, 5
- Size 18 ... 193
- Component series 1X
- Maximum operating pressure 210 bar
- Maximum displacement 193.4 cm³
- Maximum flow 285 l/min

Variable vane pumps, direct controlled PV7..A

Photo

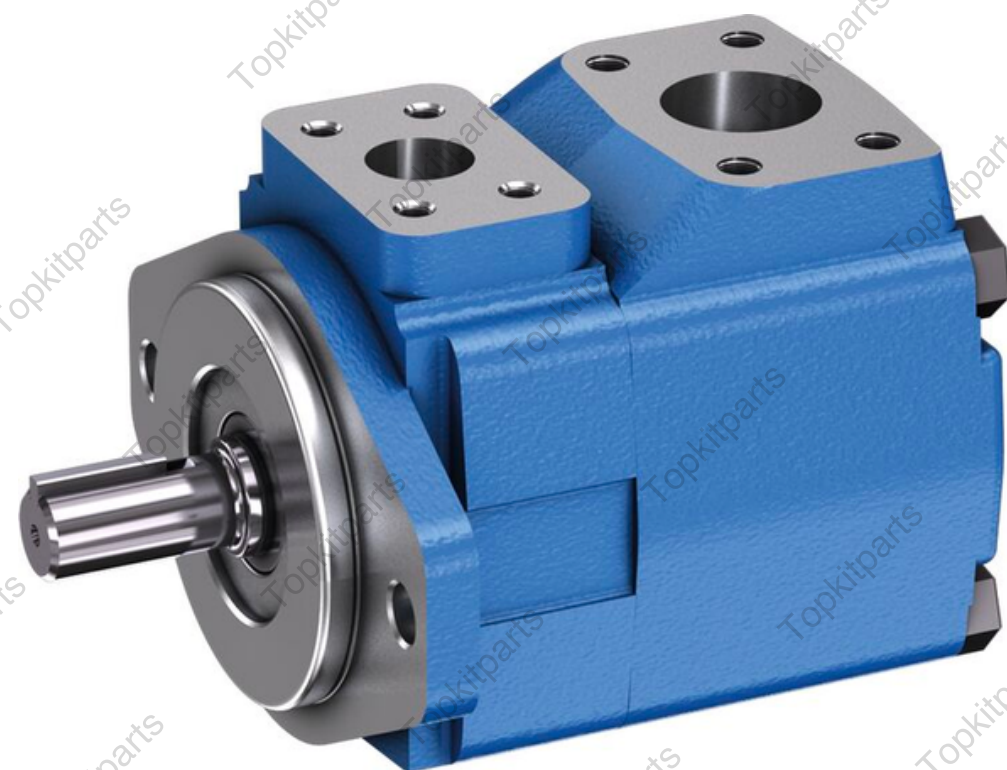


Technical data

- Frame size 06, 20
- Size 10 ... 25
- Component series 1X, 2X
- Maximum operating pressure 100 bar
- Maximum displacement 25 cm³
- Maximum flow 36 l/min

Fixed displacement vane pumps PVQ

Photo



Technical data

- Frame size 1, 2, 4, 5
- Size 18 ... 193
- Component series 1X
- Maximum operating pressure 210 bar
- Maximum displacement 193.4 cm³
- Maximum flow 285 l/min

Fixed displacement vane pumps PVH

Photo



Technical data

- Fixed displacement
- Frame size 1, 2
- Size 16 ... 79
- Nominal pressure 290 bar
- Maximum pressure 320 bar
- Displacement 15.9 ... 79.3 cm³

Contact Us

 +86 150 539 47199

 Topkitparts.com

 george@topkitparts.com

 1-1-401, Hailiang Mansion, Liuhang Street,
High-tech Zone, Jining City, Shandong
Province, China

